

The Promenade of St Lucie West

1880 SW Fountainview Blvd., Port St. Lucie, FL 34986



PROPERTY HIGHLIGHTS:

- **Building Size:** Up to 6,500 SF
- **Lease Type:** Build-To-Suit or Ground Lease
- **Notable Tenants:** Carrabba's Italian Grill & Residence Inn by Marriott
- **Municipality:** Port St. Lucie
- **County:** St. Lucie County
- **Signage:** Monument & Directional Signage Available
- **Traffic Counts:** 65,500 CPD (I-95)
10,500 CPD (Exit Ramp)
- **Frontage:** I-95
- **Utilities:** Water and Sewer stubbed to site
- **Retention:** Off-Site (in place)

	1 Mile	3 Mile	5 Mile
Population	3,560	45,207	116,653
Households	1,684	17,497	42,480
Av. HH Income	\$93,287	\$79,612	\$71,256
Employees	1,166	12,872	22,584



LINEBERRY
PROPERTIES

Mark Lineberry

Cell (615) 478-3130

Email info@LineberryProperties.com

Lineberry Properties, Inc.

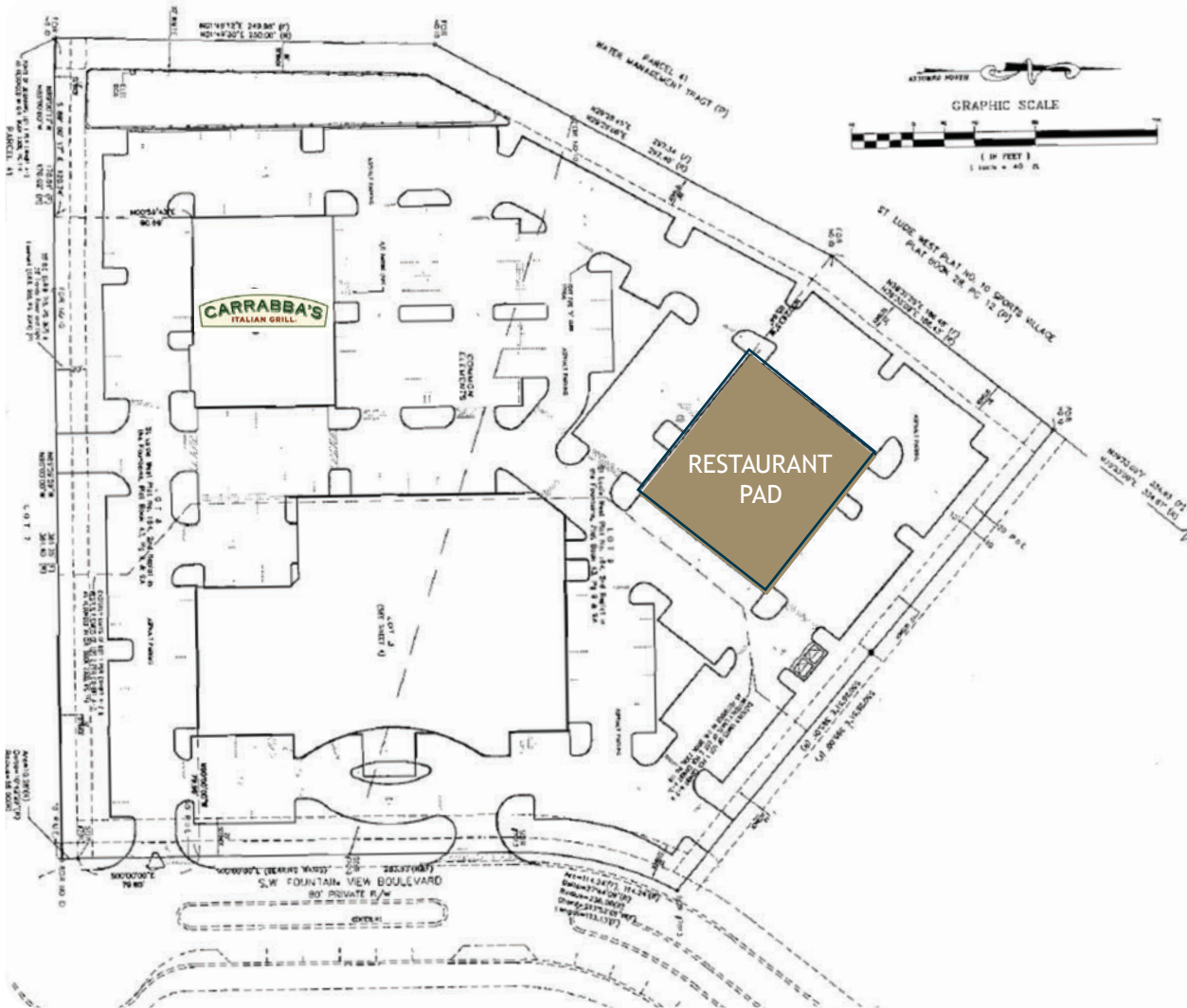
LineberryProperties.com

P.O. Box 1767, Mt. Juliet, TN 37121

Office (615) 758-5836

LineberryProperties.com

SITE PLAN



LINEBERRY
PROPERTIES

Mark Lineberry

Cell (615) 478-3130

Email info@LineberryProperties.com

Lineberry Properties, Inc.

LineberryProperties.com

P.O. Box 1767, Mt. Juliet, TN 37121

Office (615) 758-5836

LineberryProperties.com

PROPERTY PHOTOS



LINEBERRY
PROPERTIES

Mark Lineberry

Cell (615) 478-3130

Email info@LineberryProperties.com

Lineberry Properties, Inc.

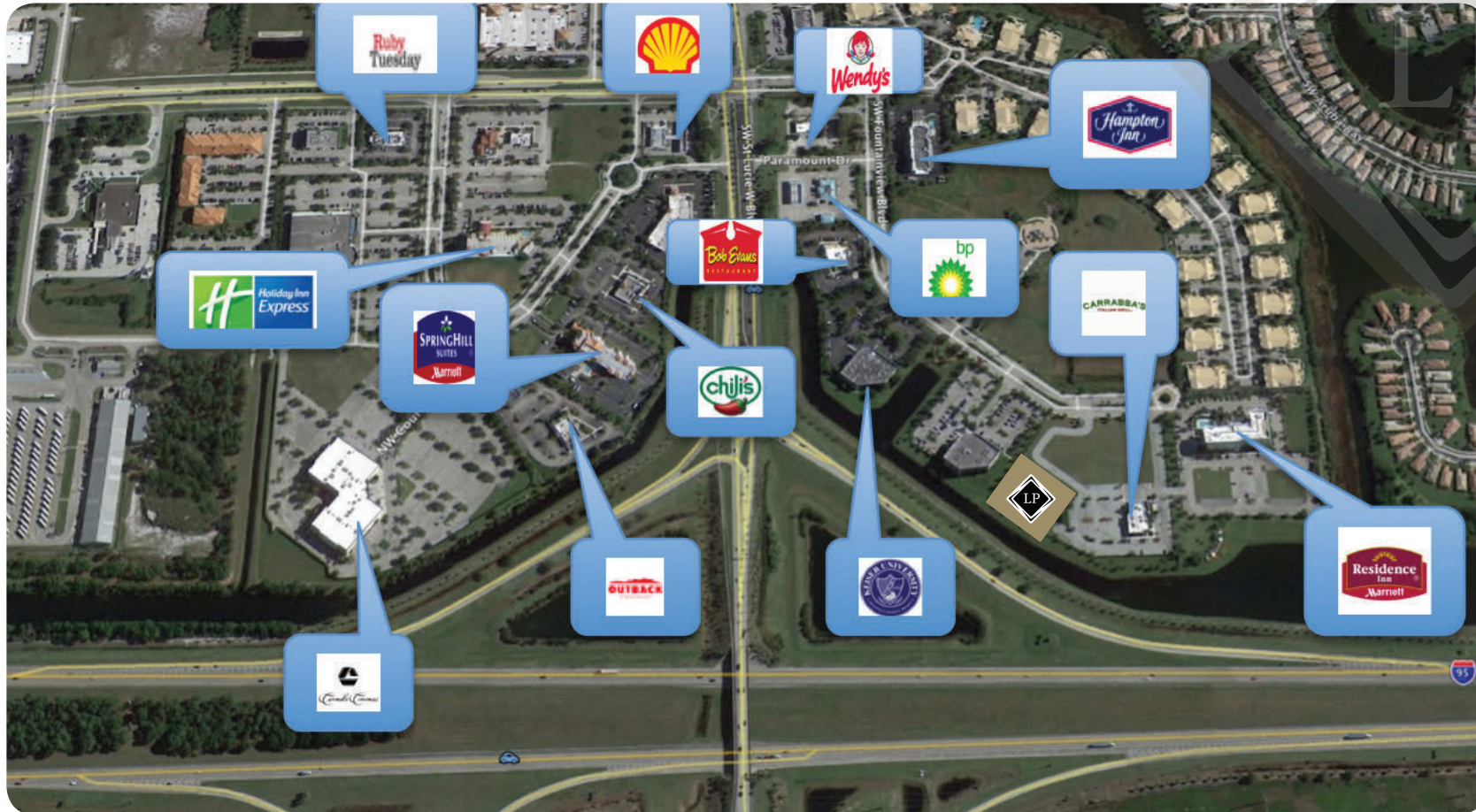
LineberryProperties.com

P.O. Box 1767, Mt. Juliet, TN 37121

Office (615) 758-5836

LineberryProperties.com

MARKET ARIAL



LINEBERRY
PROPERTIES

Mark Lineberry

Cell (615) 478-3130

Email info@LineberryProperties.com

Lineberry Properties, Inc.

LineberryProperties.com

P.O. Box 1767, Mt. Juliet, TN 37121

Office (615) 758-5836

LineberryProperties.com